



Every move you make
Enhanced by expertise

When moves are joined up

A wide range of products, smart technologies
and custom consultancy

To face the challenges of today's world, moves need to be joined up. Think of a port terminal from a bird's eye. It should work in a co-ordinated manner, with every head, hand and hoist working towards a common goal. If this does not yet apply to your port terminal, then Continental Port Solutions offer an exciting opportunity to improve operational efficiency and effectiveness.

Continental's smart technology analyzes every move, noticing needs, pain points and small changes in tire temperature and pressure. This allows us to combine information that is just seconds old with our wide experience of many ports and terminals gathered over several years.

Place your trust in Continental's decades of expertise in producing tires that are efficient, speedy, sustainable, long-lasting and reliable. Benefit from our consultancy services and comprehensive tires portfolio to make your port terminal operate as one, with tires that will not let the team down.

This is at the core of our advice and consultancy. We assist you in making crucial decisions about which tires from our wide portfolio of radials, V.ply and solids are best suited - a choice which is dependent on complex factors, taking into account both the vehicles and their assigned tasks. As we maintain a full range of tires, we can always suggest the best one to fit your individual requirements. In doing so, we take into account your specific business goals such as tire lifetime, efficiency and more.

Continental
Port
Solutions

Tires

- › Radial
- › V.ply
- › Solid

Digital Solutions

- › ContiPressureCheck
- › ContiConnect

Consulting

- › Analysis and consideration
- › Support
- › Recommendation

Up to the challenge

Our tires are part of a holistic, future-proof solution

Ports are at the heart of today's increasingly complex logistics chains. To survive in today's environment, ports need to address five major challenges:



Scale

Container ships are even larger and ports have to process ever greater loads. Many port terminals are growing too, while others have to deal with higher cargo throughputs in the same limited space as before. Our robust, perfectly suited tires stand up to heavier wear and greater loads.



Sustainability

Port vehicles are responsible for a high percentage of emissions - emissions which efficient tires can reduce. Our digital solutions and consultancy services optimize efficiency in real time. And our Port Plus Compound with less wear ensures a longer lasting tire and more sustainable use of resources.



Speed

Ports have to turn goods around ever faster to remain competitive. Our tires deliver even when time is of essence.



Smartness

Due to the emergence of the Internet of Things, interconnected port terminals represent a competitive advantage for all the above factors. Smart connectivity is embedded in our port tires for real-time data collection and analysis.



Safety

Port workers are exposed to less danger if vehicles are stable. That's why our tires are engineered for stability, strength and performance.

Tire technologies that keep you moving

Whether radial or V.ply - we can offer the whole range of tires and deliver exactly the right construction for every application. Additionally, we offer digital solutions

Radial - Motion in distance

The construction of the radial tires allows the sidewall and the tread area to work independently of each other, which in turn enables the contact patch to be stiffer, flatter, wider, more stable and has less tread movement when driving. This leads to a lower heat build up and wear rate, making a radial tire the optimum choice for longer distance applications.



Improved grip and traction

The wide, flat footprint leads to even tread wear, increasing the tire's lifetime.

Puncture resistance

The multiple steel belt construction results in increased puncture resistance, offering more effective protection against damages caused by foreign objects.

Mileage and endurance

The low heat build up of the radial construction ensures excellent endurance and mileage in longer distance applications.

Compound

This innovative new compound has been developed specifically for radial tires. Featuring a unique combination of natural and synthetic components, it reduces heat build-up, allowing the tire to run cooler and also resist heat-induced and abrasive tread wear.

monitoring and analyzing data from the tires to improve the efficiency of your port facilities.

V.ply - Motion with stability

In contrast to standard cross-ply tires, the crossing textile layers of a V.ply tire are arranged at an angle of about 30°. Together with the multiple sidewall layers, this provides an increased tire stiffness, enabling a higher level of stability and durability when making sudden moves and turns. All in all, V.ply tires provide the best performance for short distances and lower speeds.

Loading stability

The stiff, rigid tread area forms a stable platform for loading and unloading containers as well as stacking them at height.

Damage resistance

In tight spaces, a strong and thick construction - especially in sidewalls - increases the resistance to damage from hitting immobile objects such as kerbs or containers.

Durability

The three wire bead cores deflect the stress put on steer axle tires when turning on the spot, resulting in enhanced bead durability.

Continental Port Plus Compound

With a high concentration of natural rubber in combination with a special carbon black, Continental Port Plus Compound has been developed to increase resistance against heat build-up and abrasion or cracking.



Your first port of call for finding the right tire type to suit your vehicle and application needs



HEAVY FORKLIFT TRUCK



EMPTY CONTAINER HANDLER



LOADED CONTAINER HANDLER / TOP LOADER



REACH STACKER



RUBBER TIRED GANTRY CRANE (RTG)



Radial



- › ContainerMaster Radial
- › ContiRT20



- › ContiRT20



- › ContainerMaster Radial



- › ContainerMaster Radial
- › ContiRT20

V.ply



- › ContainerMaster+
- › DockMaster+



- › ContainerMaster+
- › DockMaster+



- › ContainerMaster+
- › DockMaster+



- › ContainerMaster+
- › DockMaster+



- › CraneMaster

 **Load & Carry** Vehicles transport containers and goods over longer distances at higher average speeds.

 **Pick & Stack** Vehicles pick up

Depending on the type of task the vehicles fulfil, there are visible trends towards specific tire construction. The vast majority of straddle carriers, for example, drive on radial tires, whereas rubber tired gantry cranes drive on cross-ply or V.ply tires. However, whilst some vehicles are used in classic radial applications (Straddle/Shuttle Carrier) and others in classic V.ply (RTG), there are some that may be found in either. As an example, a reach stacker is a very flexible vehicle that can be

used in multiple applications. If it is doing a lot of load and carry work, then radial is the best solution. In pick and stack applications, V.ply is the better choice. Our experienced team of sales representatives, as well as our technical customer service, are the first touchpoints for our customers: They visit our customer base worldwide to consult them on the right tire choice for their specific application.



**STRADDLE/
SHUTTLE CARRIER**



**AUTOMATED
GUIDED
VEHICLE (AGV)**



**TERMINAL
TRACTOR**



**TERMINAL
CONTAINER
TRAILER**



**TERMINAL
ROLL
TRAILER**



› StraddleMaster Radial



› StraddleMaster Radial



› TerminalTransport
› TerminalMaster
› ContiRV20



› TerminalTransport
› TerminalMaster
› ContiRV20

Solid



› ContainerMaster+ *
› TerminalMaster V.ply



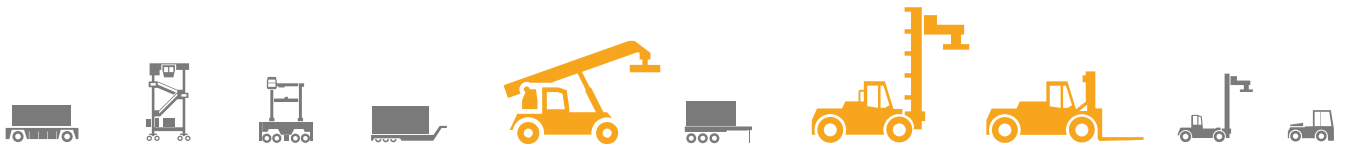
› Trailer
› SC20+



› MH20
› MC20

and stack containers, travelling short distances with a large amount of turning on the spot.

tive to get your own tailor-made solution.



ContainerMaster Radial

A tire that keeps cool while going the extra mile

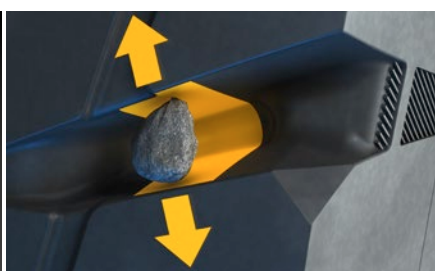
With a tread compound developed to reduce heat build-up, our new ContainerMaster Radial is the perfect tire for longer distance load and carry applications that can potentially be in excess of 60 km driving distance per day.

To also ensure high levels of traction in all weathers and on all surfaces, deep tread grooves with linked tie bars ensure a stable tread block to maximize efficiency and transmission of tractive force. The tie bars also limit block vibration, which leads to reduced abrasion and improved mileage, as well as directional stability.

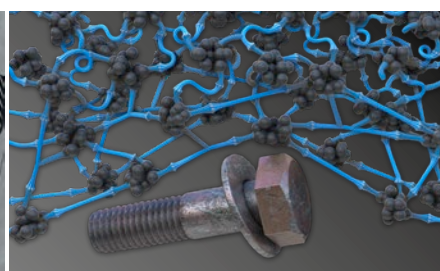
The ContainerMaster Radial range is suitable for heavy forklifts, loaded container handlers and reach stackers.



High mileage and lifetime



Increased resistance against FOD*



Increased durability

	High mileage and lifetime	Increased resistance against FOD*	Increased durability
Feature	› Deep tread depth IND-4	› Deep U-shaped tread grooves	› Innovative tread compound
Effect	› High amount of tread rubber	› Easy ejection of stones and foreign objects as tread moves through contact patch	› Resistance to severe wear and tread cracking caused by stress tears or foreign objects

Dimensions

	Sensor
16.00 R 25	1
18.00 R 25	1
18.00 R 33	1

1 Tire is delivered with sensor ex factory.

*Foreign object damages

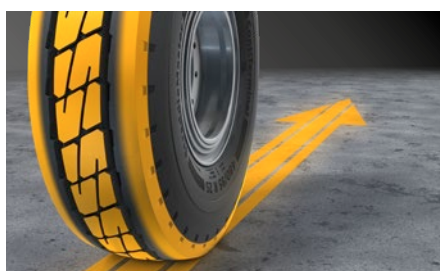


StraddleMaster Radial

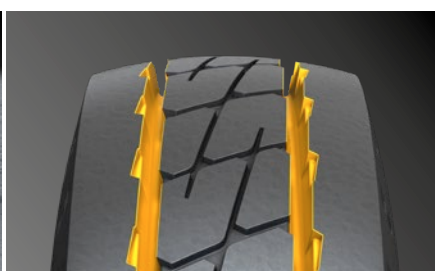
Keep on the straight and narrow

Driven over distance, our range of StraddleMaster Radial tires are designed with a key focus on endurance, stability and steering precision. The wide outside closed shoulder ribs ensure precision on both long straights or sweeping curves, whilst the central tread grooves ensure a high amount of water dissipation for better traction in wet conditions. Keeping tire heat build-up under control with its innovative rubber compound and sidewall cooling vents is one of the many factors behind this model of tire's long lifespan.

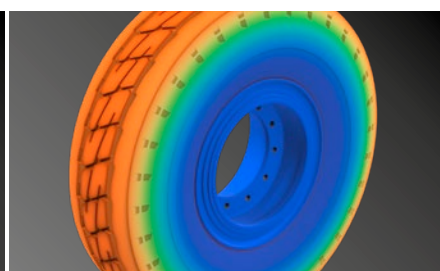
StraddleMaster Radial tires are ideal for straddle and shuttle carriers for conduction load and carry operations, as well as for AGVs.



High degree of steering precision with driver comfort



Traction in wet conditions



High lifetime and endurance of the tire

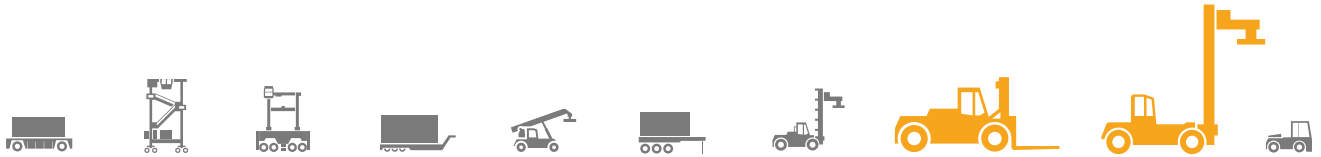
Feature	Effect
<ul style="list-style-type: none"> › Central tire rib and closed outside shoulder rib 	<ul style="list-style-type: none"> › Ensures longitudinal driving and cornering stability
<ul style="list-style-type: none"> › Deep wide longitudinal tread grooves 	<ul style="list-style-type: none"> › Provides a high level of water dissipation in wet conditions
<ul style="list-style-type: none"> › Innovative tread compound 	<ul style="list-style-type: none"> › Low heat build-up for increased endurance in longer distance applications

Dimensions

Sensor

450/95 R 25 / 16.00 R 25	1
480/95 R 25	1
18.00 R 25	1
18.00 R 33	1

1 Tire is delivered with sensor ex factory.

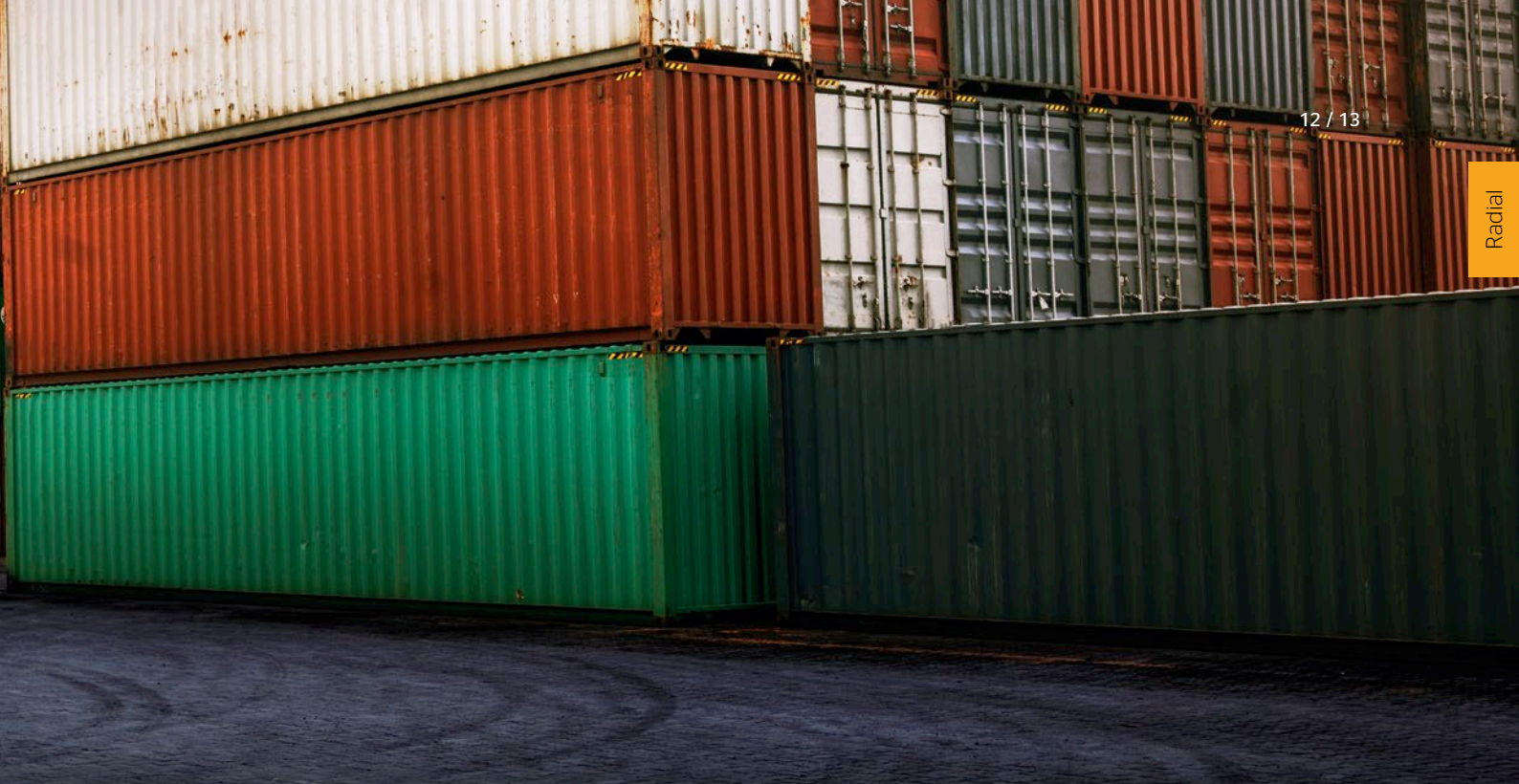


ContiRT20

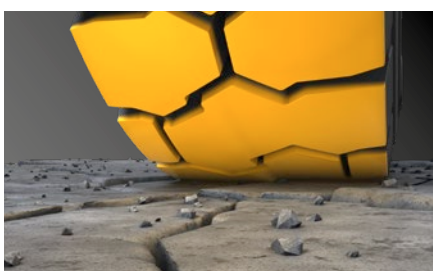
Durable and efficient over long distances

Whether fitted on empty container handlers working at speed in container yards to move and stack empty containers or on heavy-forklifts transporting bulky industrial goods over short distances, the ContiRT20 is the perfect tire solution. Its intricate tread design features a high number of tread edges to grip the surface beneath the wheel providing high levels of traction on both smooth and more uneven ground surfaces to ensure that there is no loss of operational efficiency. Moreover, in order to deliver high mileage and long-term durability, the ContiRT20 features an innovative tread compound with high resistance to wear and tread cracking.

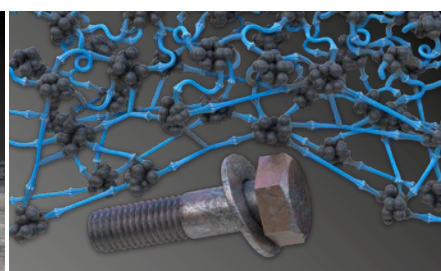
All in all, it's the perfect solution for both port and industrial use.



Excellent all-round traction on many surfaces and in various climatic conditions



Good transmission of tractive force with high mileage



High durability

Feature			
Effect	<ul style="list-style-type: none"> › High number of tread edges 	<ul style="list-style-type: none"> › Large, robust tread blocks with linked tie bars 	<ul style="list-style-type: none"> › Innovative tread compound
Effect	<ul style="list-style-type: none"> › Multiple tread edges grip ground surface 	<ul style="list-style-type: none"> › Improves transmission of tractive force and increases mileage by reducing vibration-induced abrasion 	<ul style="list-style-type: none"> › Resistance to severe wear and tread cracking

Dimensions

Dimensions	Sensor
12.00 R 20*	3
12.00 R 24	1
14.00 R 24	1

- 1 Tire is delivered with sensor ex factory.
- 3 Tire can be fitted with sensor by local service partner.

***Must only be used in combination with TSR of Continental**



TerminalMaster

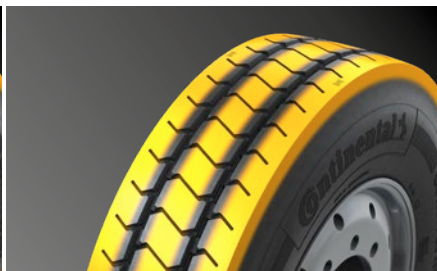
Stay longer on the road under challenging port terminal conditions

Do you need a robust industrial-specification tire for challenging port terminal conditions where the risk of damage and puncture is very high? The TerminalMaster is the solution. With an extra-deep tread profile and industrial-strength casing, the TerminalMaster has a higher resistance to damage and punctures than standard tires, ensuring an increased tire life and less downtime. Its wear-resistant compound and wide outside shoulder ribs also reduce the effect of corner scrub, improving mileage.

Fitted on terminal tractors and trailers, the TerminalMaster is the perfect complementary tire for these vehicles in load and carry applications.



High mileage and lifetime



Driving stability and water clearance capabilities in wet conditions



Higher mileage and less vulnerability to puncture from FOD* and side impacts

Feature	Effect
<ul style="list-style-type: none"> › Closed shoulder design tread rib 	<ul style="list-style-type: none"> › Reduced impact of corner scrub during turns
<ul style="list-style-type: none"> › Three ribbed tread pattern with longitudinal grooves 	<ul style="list-style-type: none"> › Directional stability and water clearance capabilities
<ul style="list-style-type: none"> › Deep tread depth, industrial-strength tire construction 	<ul style="list-style-type: none"> › High amount of tread rubber and thicker sidewalls

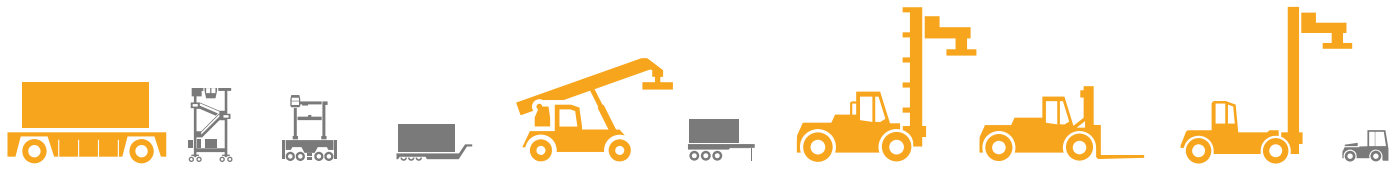
Dimensions

Sensor

300/80 R 22.5 (TerminalTransport)	3
280/75 R 22.5	2
310/80 R 22.5	2
310/80 R 22.5 (TerminalMaster 30 T)**	2
12.00 R 20 (ContiRV20)	3

- 2 Tire can be ordered with sensor ex factory as option.
- 3 Tire can be fitted with sensor by local service partner.

*Foreign object damages
 ** Extra tread depth



ContainerMaster+

Make light work of intricate moves

When working in pick and stack applications, reach stackers are constantly making short stop-start moves with frequent turning on the spot. For tires, this increases the risk of high wear rates due to abrasion and of stress cracks in the tires from steering tension.

In order to resolve this, the ContainerMaster+ features a unique Port Plus Compound to ensure high levels of resistance to wear on abrasive surfaces and also an increased tensile strength to prevent microcracks which can lead to the formation of larger cracks. In addition, large-sized tread blocks provide the highest level of stability when loading and unloading heavy containers.

This ContainerMaster+ tire is an ideal match for the requirements of reach stackers, loaded container handlers, empty container handlers, heavy forklifts and AGV*. It is suitable for vehicles assigned to both pick and stack as well as load and carry applications at shorter distances.

* ContainerMaster+ for AGV applications only with IND-3 tread.



Long lifetime and high stability when loading and unloading containers



Reduced risk of groove cracks and heat build-up



High mileage in pick and stack applications and reduced risk of tread cracks

Feature	Effect
<ul style="list-style-type: none"> › Large tread and shoulder blocks 	<ul style="list-style-type: none"> › Wide, flat stable load platform
<ul style="list-style-type: none"> › Deep wide tread grooves 	<ul style="list-style-type: none"> › Supports easier turning on the spot, by reducing stress in tread blocks
<ul style="list-style-type: none"> › Port Plus Compound 	<ul style="list-style-type: none"> › Increased abrasion resistance in demanding applications (turning on the spot) due to increased tensile strength

Dimensions

Sensor

12.00-20 (IC40)	2
12.00-24	3*
14.00-24	3*
16.00-25	3
18.00-25	3
18.00-33	3
24.00-35 (General Tire TI 132)	

- 2 Tire can be ordered with sensor ex factory as option.
- 3 Tire can be fitted with sensor by local service partner.

* Tire sensor cannot be used in tube type fitment.





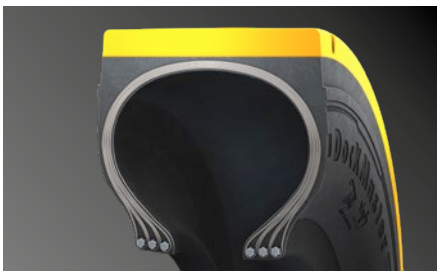
DockMaster+

Weighty loads need weighty tires

Still waters run deep, and below the smooth surface of the DockMaster+ lies an awful lot of depth. With the highest levels of tread volume and amount of rubber possible thanks to its deep tread, this tire has a long service life. Wide and smooth, it provides a stable load platform which reduces the pendulum movement of the container mast when stacking at higher levels, allowing for more efficient stacking as less time is required to align containers.

The DockMaster+ also features Continental's Port Plus Compound: this increases resistance to abrasion during tight turns on the spot thanks to higher tensile strength, offering higher mileage and a reduced risk of tread cracks.

The DockMaster+ is suitable for reach stackers, loaded and empty container handlers and heavy fork lifts primarily deployed in pick and stack applications.



Increased lifetime



Higher stacking efficiency (minimized time to align container during stacking)



High mileage in pick and stack applications and reduced risk of tread cracks

Feature	<ul style="list-style-type: none"> › Highest possible tread volume 	<ul style="list-style-type: none"> › Wide and flat tread area 	<ul style="list-style-type: none"> › Port Plus Compound
Effect	<ul style="list-style-type: none"> › Maximum amount of tread rubber 	<ul style="list-style-type: none"> › Stable load platform reducing pendulum movement of container mast 	<ul style="list-style-type: none"> › Increased abrasion resistance in demanding applications (turning on the spot) due to increased tensile strength

Dimensions

Dimensions	Sensor
14.00-24	3*
18.00-25	3
18.00-33	3



3 Tire can be fitted with sensor by local service partner.

*Tire sensor cannot be used in tube type fitment.

CraneMaster and TerminalMaster V.ply

Strong shoulders with a heavy load to carry

CraneMaster tires have narrow tread blocks with rounded contours which reduce stress when turning on the spot; this enables high maneuverability while minimizing the risk of tread cracks. Their wide tread area offers a stable load platform-essential when moving heavy loads at slow speeds. CraneMaster tires are used for rubber-tired gantry cranes (RTG).

TerminalMaster V.ply tires are designed with a closed shoulder, which heightens stability precision while travelling in a straight line and cornering. The three-ribbed design keeps tread vibration to a minimum, an advantage for AGVs as fewer steering corrections are required. Finally, the innovative Port Plus Compound offers improved abrasion resistance to increase the lifetime of the tire.



CraneMaster



Outstanding maneuverability with reduced risk of tread cracks in stationary turns



Stability in slow speed and stationary high load situations

Feature	<ul style="list-style-type: none"> › Tread blocks with rounded tread contour and narrow tread blocks 	<ul style="list-style-type: none"> › Wide tread area
Effect	<ul style="list-style-type: none"> › Reduced tread stress during turning on the spot 	<ul style="list-style-type: none"> › Stable load platform

Dimensions	Sensor
14.00-24	3*
16.00-25	3
18.00-25	3

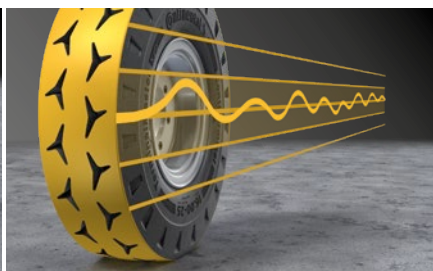
Dimensions	Sensor
21.00-25	3
21.00-35	3
23.5-25 (General Tire brand)	



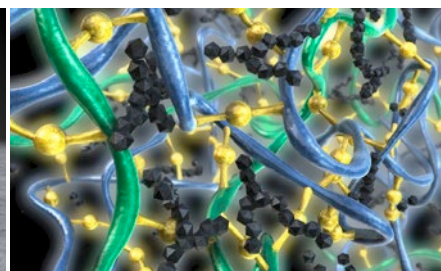
TerminalMaster V.ply



Precise track holding



Reduced tread vibration**



Increased lifetime

Feature	<ul style="list-style-type: none"> › Closed shoulder tread design 	<ul style="list-style-type: none"> › Three ribbed tread design 	<ul style="list-style-type: none"> › Port Plus Compound
Effect	<ul style="list-style-type: none"> › Stability on straight lines and corners 	<ul style="list-style-type: none"> › Low tread vibration 	<ul style="list-style-type: none"> › Resistance to abrasion

Dimensions

16.00-25
21.00-25

Sensor

3
3



3 Tire can be fitted with sensor by local service partner.

*Tire sensor cannot be used in tube type fitment.

**Important for AGVs as less automated steering corrections are required.



MH20/MC20/SC20+/Trailer

Solid performance

MH20/MC20

For port roll trailers, Continental offers the MH20 and MC20 solid press-on band tires specially designed for carrying very high loads. With a low overall diameter, MH20 and MC20 tires are also the fitment of choice for trailers with low ride heights. Both tires feature a tread compound with high resilience to cracks and cuts as well as a low rolling resistance.

MH20 features a slick tire profile for maximum tread volume and mileage, whilst MC20 features a tread pattern for traction and grip on uneven surfaces.

Wide size range available

Please contact your sales representative for detailed information.



Trailer/SC20+

For container trailers where solid tires are preferred, Continental offers both the SC20+ and Trailer solid tire. Maintenance free (puncture proof and no air pressure checking required), both tires offer outstanding resistance to damage and cuts.

The Trailer is a solid slick tire with maximum wear volume for high mileage and a long lifetime. Its slick pattern prevents heel and toe wear and resists corner scrub.

In situations requiring a treaded tire, the SC20+ offers superb traction on uneven surfaces.



Dimensions

12.00-20/8.00 (SC20+)

12.00-20/8.50 (SC20+)

12.00-20/10.00 (SC20+)

10.00-20/8.00 (Trailer)

10.00-20/7.50 (Trailer)

Talk to our qualified sales representative to discuss the right tire for your specific requirements.



Intelligent port moves

Benefits of digital tire monitoring

When transporting heavy containers, tires are permanently under pressure, day in and day out. Driving with underinflated or overheated tires leads to increased fuel consumption and can cause premature tire failures - a serious concern for vehicle safety in daily operations. As a mandatory consequence the inflation pressure and temperature should be monitored constantly. All Continental radial port tires of 24 inch and above are equipped with our premounted sensors; our V-ply tires can be fitted with

the sensor as well. These sensors transmit data in real time to our stand-alone or complete fleet monitoring solutions of your choice making time-consuming manual tire checks redundant.

Your benefits



Data accuracy



Improved productivity



Cost efficiency



Versatility



Safety



Reliability



Eco-friendliness

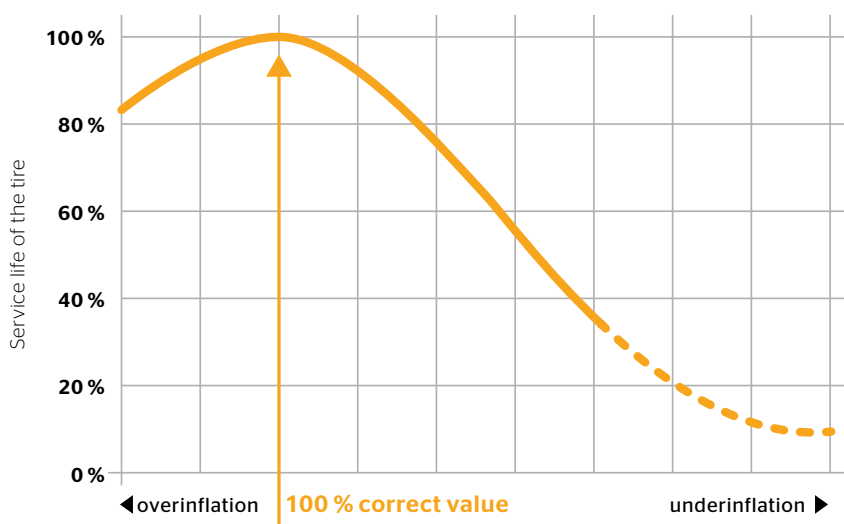


Transparency



Effects on a tire when operating at incorrect inflation.

- › Based on an 18.00 R 33 dimension tire (Radial or V.Ply), running at 10 % below recommended tire pressure the service-life would be reduced by 8 %.
- › Costs of under-inflation = tire price x 8 %
- › This indicates that only 92 % of the designated life is used.
- › As a result, costs for tires - as well as for additional fitment and services - rise.



ContiPressureCheck

Single vehicle monitoring

The **ContiPressureCheck** system provides an effective solution. A sensor inside the tire is constantly measuring air pressure and temperature to ensure driver safety and tire performance. ContiPressureCheck is a complete, driver-focused system for single vehicles and can be integrated into third-party telematics.



ContiPressureCheck Single

is the perfect single-vehicle solution for monitoring tire pressure and temperature using a dashboard display which provides the driver with a continuous view of tire data.

ContiPressureCheck Integrated

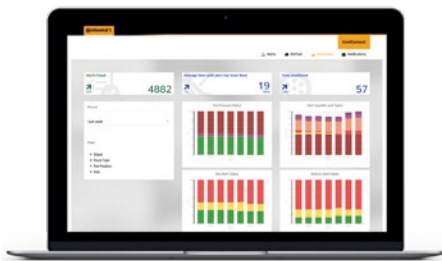
allows OEMs and telematics providers to offer end users an easy solution for monitoring tire pressure and temperature which can be integrated into their on-board (telematics) system.

Components	1	ContiPressureCheck display	●	
		In-vehicle telematics integration - proprietary		●
		In-vehicle telematics integration - Android app		●
	2	ContiConnect Web portal		
		Third-party platform integration		●
Connectivity	3	Additional Receiver	●	●
	4	Hand-Held tool	●	●
	5	Central Control Unit	●	●
	6	Yard Reader Station		
	7	Telematic Control Unit		●
		Bluetooth dongle		●
		Cables	●	●
Tires & sensors	8	Tire Sensor	●	●

ContiConnect

Multiple vehicle solution

ContiConnect takes digital tire monitoring to the next level. The solution offers an easy, convenient way to connect multiple vehicles and helps fleet managers switch from inflexible manual service routines to targeted in-time maintenance. Tire issues are immediately identified upon return to the fleet yard or in real-time and are compatible any telemetry provider.



ContiConnect Yard is the solution for multiple vehicles, which regularly return to dedicated checkpoints. It monitors tire pressure and temperature remotely and the data is then automatically uploaded to the ContiConnect Web portal.

ContiConnect Live* is the optimal solution for remotely monitoring the tire pressure and temperature of multiple vehicles in real time - all the time, wherever they may be. The data is automatically uploaded to the ContiConnect Web portal.

Components	1 ContiPressureCheck display		
	In-vehicle telematics integration - proprietary		●
	In-vehicle telematics integration - Android app		●
	2 ContiConnect Web portal	●	●
	Third-party platform integration	●	●
	3 Additional Receiver		●
	4 Hand-Held tool	●	●
Connectivity	5 Central Control Unit		●
	6 Yard Reader Station	●	
	7 Telematic Control Unit		●
	Bluetooth dongle		●
	Cables		●
Tires & sensors	8 Tire Sensor	●	●

● Required hardware components

● Optional components

The right solution for our customers is always dependent on their individual set-up e.g. amount of vehicles, workflows, vehicles returning to the same spot. The homologation per country needs to be considered as well. Please get in touch with your sales contact if you have detailed queries.

Components



1 ContiConnect Web Portal

- › Browser-based web interface for access to data, statistics and reports.



2 Hand-Held tool

- › Initial configuration of entire system
- › Wireless communication with tire sensors
- › Synchronizes tire sensors to each wheel position
- › Wired communication with CCU



3 Receiver / Central Control Unit (CCU)

- › Receives and evaluates signals from tire sensors
- › Generates warnings and provides them for display (up to 24 tires fitted on up to 6 axles)



4 Telematic Control Unit

- › The Telematic Control Unit receives the processed data from the CCU and transmits it along with a GPS signal to ContiConnect webportal while the vehicle is moving in operation.



5 Tire Sensor

- › Integrated tire sensor with radio frequency transmitter and individual coding per running wheel
- › Sensor collects data on tire pressure and temperature and shows its battery status.
- › Access information directly due to Bluetooth connection



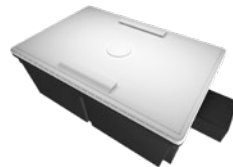
6 Display in the driver's cockpit

- › This in-cabin display shows the status of the tire and indicates seven different types of warnings and the position of the tire.



7 Yard Reader Station

- › The connectivity component which receives wireless data from the tire sensor upon returning to the yard.



8 Additional Receiver









- Integrated antenna and receiver to be used if:
- › vehicle has an axle spread of more than 6m
 - › vehicle has more than three axles
 - › a trailer is docked.



9 Cleaning Scraper and Mounting Tool

- › Scraper for pretreating the inner layer of the tyre
- › Pressing tool including insert
- › Tool for pressing on the tire sensor during bonding

Required components per vehicle

	ContiPressureCheck		ContiConnect	
	Single	Integrated	Yard	Live
Components	<ul style="list-style-type: none"> 2 Hand-Held tool 3 CCU 5 Tire Sensor 6 Display 	<ul style="list-style-type: none"> 2 Hand-Held tool 3 CCU 5 Tire Sensor › In-vehicle telematics integration proprietary 	<ul style="list-style-type: none"> 1 ContiConnect Web portal 2 Hand-Held tool 5 Tire Sensor 7 Yard Reader Station 	<ul style="list-style-type: none"> 1 ContiConnect Web portal 2 Hand-Held tool 3 CCU 4 Telematic Control Unit 5 Tire Sensor
 Terminal Tractor	<ul style="list-style-type: none"> › 17 34 115 › 17 34 119 › 17 34 121 	<ul style="list-style-type: none"> › 17 34 115 › 17 34 119 › 17 34 122 	<ul style="list-style-type: none"> › 17 34 119 › Yard Reader Station 	<ul style="list-style-type: none"> › 17 34 115 › 17 34 119 › Telematic Control Unit
 Trailer	<ul style="list-style-type: none"> › 17 34 117 › 17 34 201 8x 		<ul style="list-style-type: none"> › 17 34 201 8x › Yard Reader Station 	<ul style="list-style-type: none"> › 17 34 117 › 17 34 201 8x › Telematic Control Unit
 AGV		<ul style="list-style-type: none"> › 17 34 116 › 17 34 201 4x › 17 34 122 	<ul style="list-style-type: none"> › 17 34 201 4x › Yard Reader Station 	<ul style="list-style-type: none"> › 17 34 116 › 17 34 201 4x › Telematic Control Unit
 RTG	*	*	<ul style="list-style-type: none"> › 17 34 119 › 17 34 168 › Yard Reader Station 	*
 Reach Stacker	<ul style="list-style-type: none"> › 17 34 116 › 17 34 119 › 17 34 121 	<ul style="list-style-type: none"> › 17 34 116 › 17 34 119 › 17 34 122 	<ul style="list-style-type: none"> › 17 34 119 › Yard Reader Station 	<ul style="list-style-type: none"> › 17 34 116 › 17 34 119 › Telematic Control Unit
 Empty Container	<ul style="list-style-type: none"> › 17 34 116 › 17 34 119 › 17 34 121 	<ul style="list-style-type: none"> › 17 34 116 › 17 34 119 › 1734122 	<ul style="list-style-type: none"> › 17 34 119 › Yard Reader Station 	<ul style="list-style-type: none"> › 17 34 116 › 17 34 119 › Telematic Control Unit
 Heavy Forklift	<ul style="list-style-type: none"> › 17 34 115 › 17 34 119 › 17 34 121 	<ul style="list-style-type: none"> › 1734115 › 17 34 119 › 1734122 	<ul style="list-style-type: none"> › 17 34 119 › Yard Reader Station 	<ul style="list-style-type: none"> › 17 34 115 › 17 34 119 › Telematic Control Unit
 Straddle Carrier	<ul style="list-style-type: none"> › 17 34 120 › 17 34 201 8x › 17 34 121 	<ul style="list-style-type: none"> › 17 34 120 › 17 34 201 8x › 17 34 122 	<ul style="list-style-type: none"> › 17 34 201 8x › Yard Reader Station 	<ul style="list-style-type: none"> › 17 34 120 › 17 34 201 8x › Telematic Control Unit

Article number: please refer to price list.

Please always check the Continental mounting manual.

One set Hand-Held tool is required per fleet for initial set-up of ContiPressureCheck and ContiConnect.

Display can also be installed for the operator in a ContiConnect Live solution.

*Please get in contact with our sales team for detailed information about these and further industrial vehicles.

Overview of our portfolio

Radial

ContainerMaster Radial

Size designation	Sensor	Load index	Speed index	Tread code	Type
16.00 R 25	1	200	A5	IND-4	TL
18.00 R 25	1	207	A5	IND-4	TL
18.00 R 33	1	214	A5	IND-4	TL



StraddleMaster Radial

Size designation	Sensor	Load index	Speed index	Tread code	Type
450/95 R 25 / 16.00 R 25	1	204	A5	IND-4	TL
480/95 R 25	1	206	A5	IND-4	TL
18.00 R 25	1	205	A5	IND-4	TL
18.00 R 33	1	214	A5	IND-4	TL



ContiRT20

Size designation	Sensor	Load index	Speed index	Tread code	Type
12.00 R 20	3	176	A5	IND-4	TL
12.00 R 24	1	178	A5	IND-4	TL
14.00 R 24	1	193	A5	IND-4	TL



TerminalTransport

Size designation	Sensor	Load index	Speed index	Tread code	Type
300/80 R 22.5	2	172	A8		TL



TerminalMaster

Size designation	Sensor	Load index	Speed index	Tread code	Type
310/80 R 22.5	2	175	A8		TL
280/75 R 22.5	2	168	A8		TL
310/80 R 22.5 TerminalMaster 30	2	175	A8		TL

ContiRV20

Size designation	Sensor	Load index	Speed index	Tread code	Type
12.00 R 20	3	176	A5		TL



X.ply

IC40

Size designation	Sensor	Load index	Speed index	Ply rating	Tread code	Type
12.00-20	3	176	A5	20		TL



V.ply

ContainerMaster+

Size designation	Sensor	Ply rating	Tread code	Type
12.00-24	3*	20	IND-4	TT/TL
14.00-24	3*	28	IND-4	TT/TL
16.00-25	3	32	IND-4	TL
18.00-25	3	40	IND-3	TL
18.00-25	3	40	IND-4	TL
18.00-33	3	40	IND-4	TL
24.00-35 (General Tire T1132)	3	48	IND-4	TL



DockMaster+

Size designation	Sensor	Ply rating	Tread code	Type
14.00-24	3*	28	IND-3S	TT/TL
18.00-25	3	40	IND-4	TL
18.00-33	3	40	IND-4S	TL



CraneMaster

Size designation	Sensor	Ply rating	Tread code	Type
14.00-24	3*	28	IND-3	TT/TL
16.00-25	3	32	IND-3	TL
18.00-25	3*	40	IND-3	TL
21.00-25	3	40	IND-3	TL
21.00-35	3	40	IND-3	TL
23.5-25 (General Tire T1188)	3	36	IND-3	TL



TerminalMaster V.ply

Size designation	Sensor	Ply rating	Tread code	Type
16.00-25	3	32	IND-4	TL
21.00-25	3	40	IND-3	TL



Solid / Press-on-Bands

Tire	Size designation	Type
SC20+ S	12.00-20/8.00	SD
SC20+ S	12.00-20/8.50	SD
SC20+ S	12.00-20/10.00	SD
Trailer	10.00-20/8.00	SD
Trailer	10.00-20/7.50	SD
MC20	multiple sizes available	SD
MH20	multiple sizes available	SD



- 1 Tire is delivered with sensor ex factory.
- 2 Tire can be ordered with sensor ex factory as option.
- 3 Tire can be fitted with sensor by local service partner.

* Tire sensor cannot be used in tube type fitment.

Continental Reifen Deutschland GmbH

Commercial Specialty Tires

Büttnerstraße 25, 30165 Hannover, Germany

Phone: +49 511 938 - 01

www.continental-specialty-tires.com